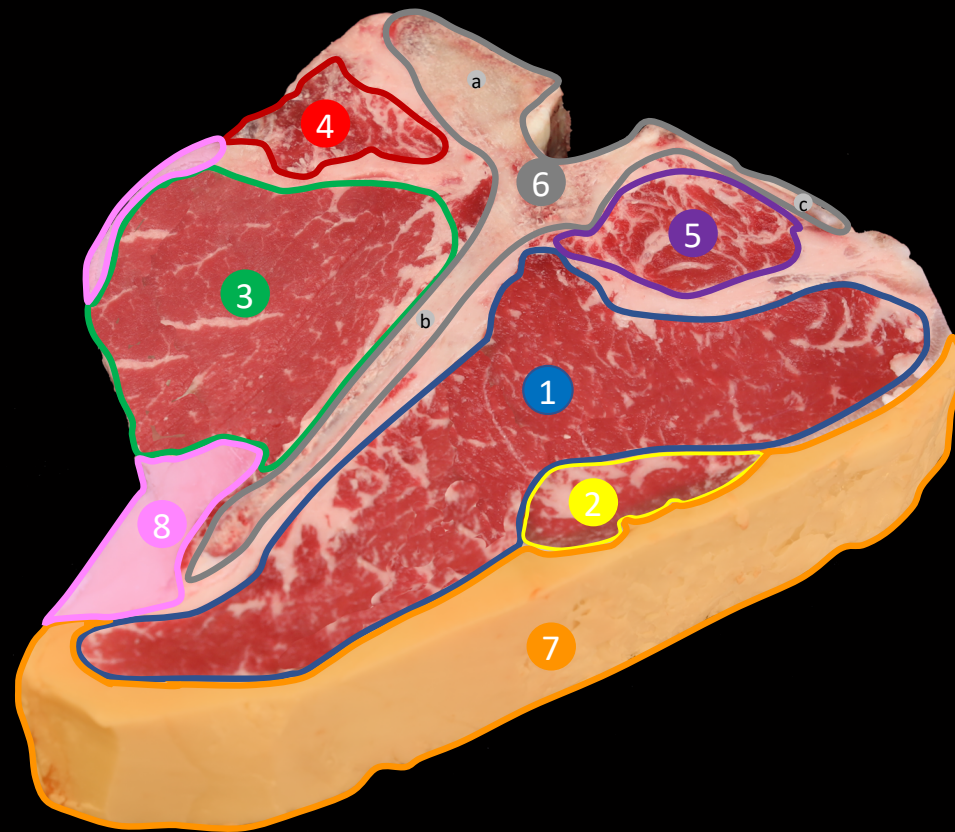
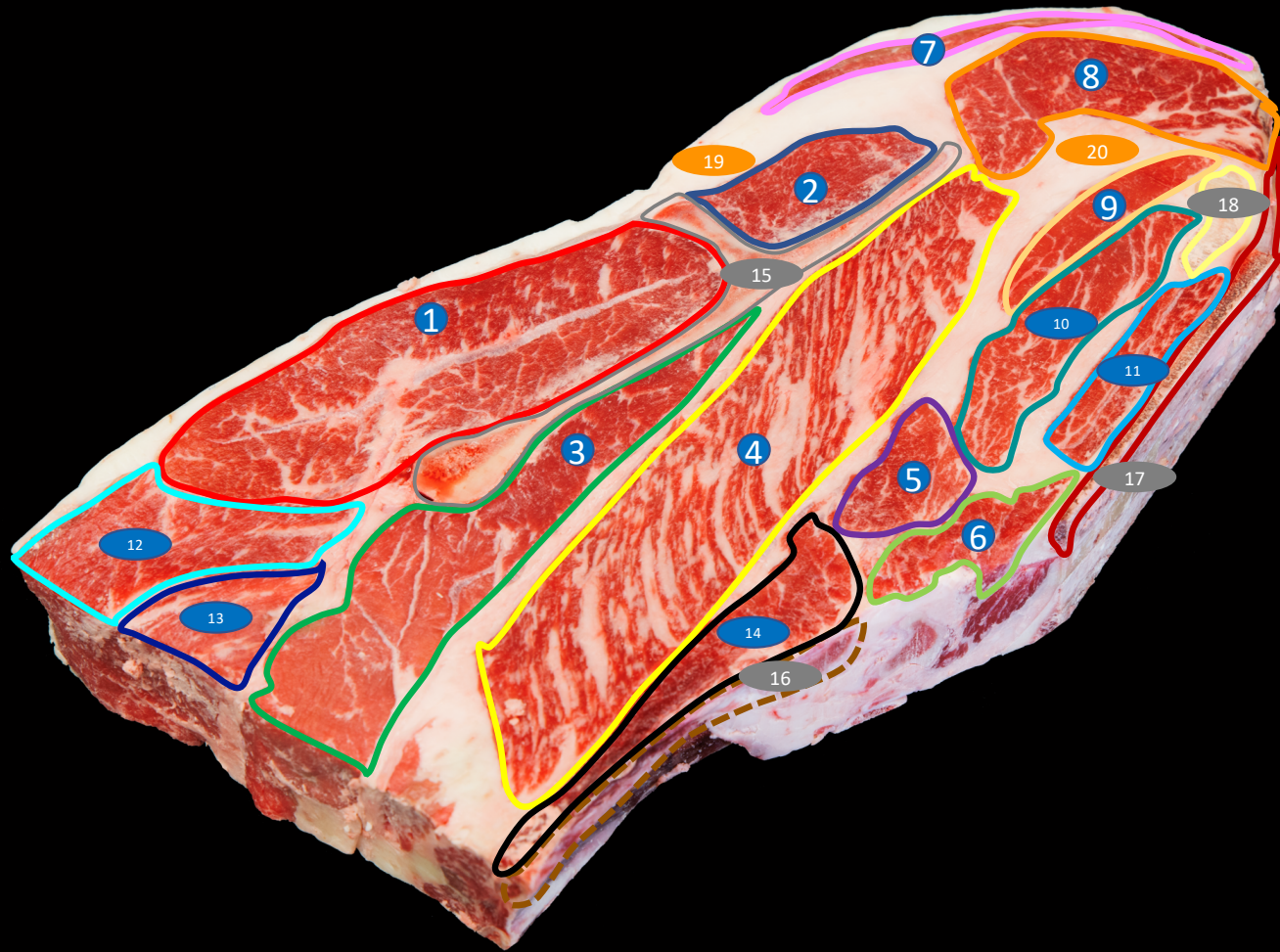


Beef Loin, Porterhouse Steak



Beef Chuck, 7-Bone Roast/ Steak

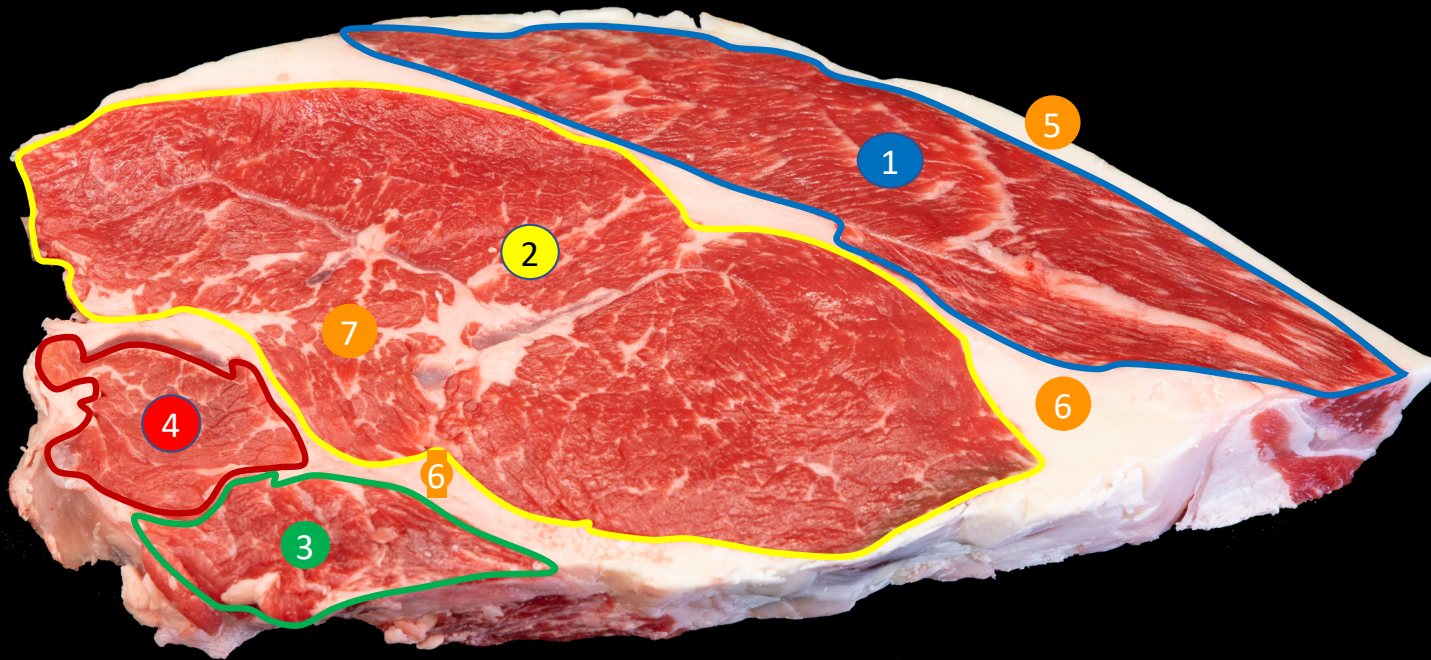


Beef Round, Round Steak

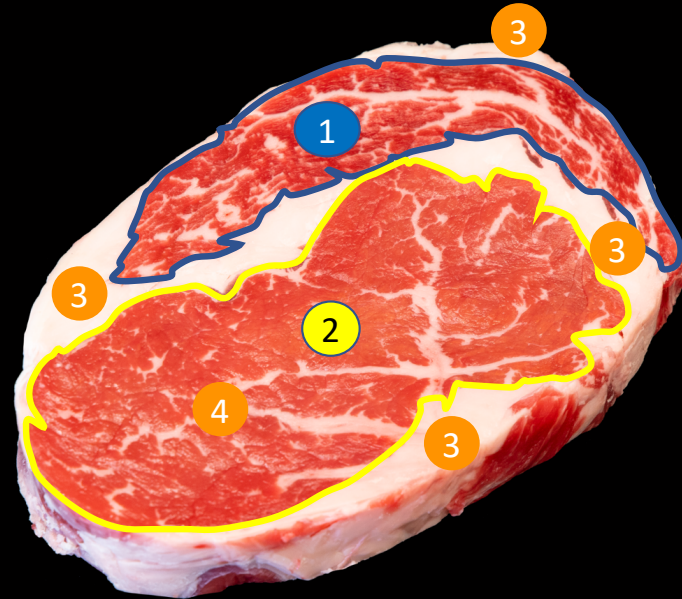


TEXAS A&M
AGRILIFE
EXTENSION

Beef Loin, Top Sirloin Steak, Boneless



Beef Rib, Ribeye Steak, Boneless



Beef Loin, Top Loin Steak

