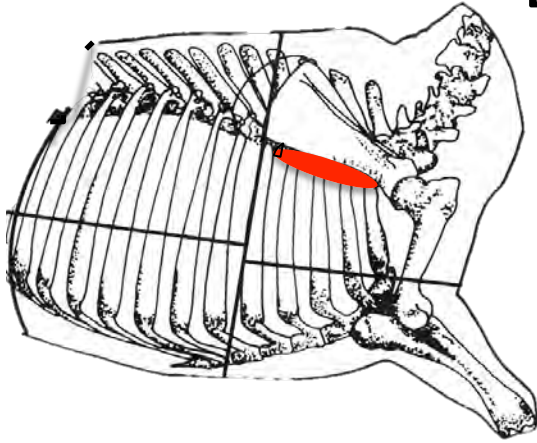


Beef Chuck, Petite Tender

B – C – 21 - D



The Beef Chuck Petite Tender (B-C-21-D) is a small muscle located on the posterior edge of the scapula. It previously was a part of the IMPS #114 Beef Chuck Shoulder Clod, however, as popularity has increased, the majority of the Petite Tenders (*Teres Major* muscle) are removed by packers and marketed independently.



Beef Chuck Petite Tender (trimmed)



Beef Chuck Petite Tender (untrimmed)

- Hints for Identification:

- This cut is shaped similarly and is approximately the size of a pork tenderloin.
- The muscle fibers essentially run one direction.
- If untrimmed, the associated fat is seam fat (not subcutaneous fat and there is heavy connective tissue that covers a portion of the muscle).